



Ark Conway Primary Academy

60 Hemlock Road, London W12 0QT T 020 3249 1180



Head's Message

The theme for this week's newsletter is Maths! At Conway we love to open our doors to other schools and educators so that we can share and be proud of the hard work our pupils and teachers put into their learning and teaching. Luckily enough this week we got to do that twice!

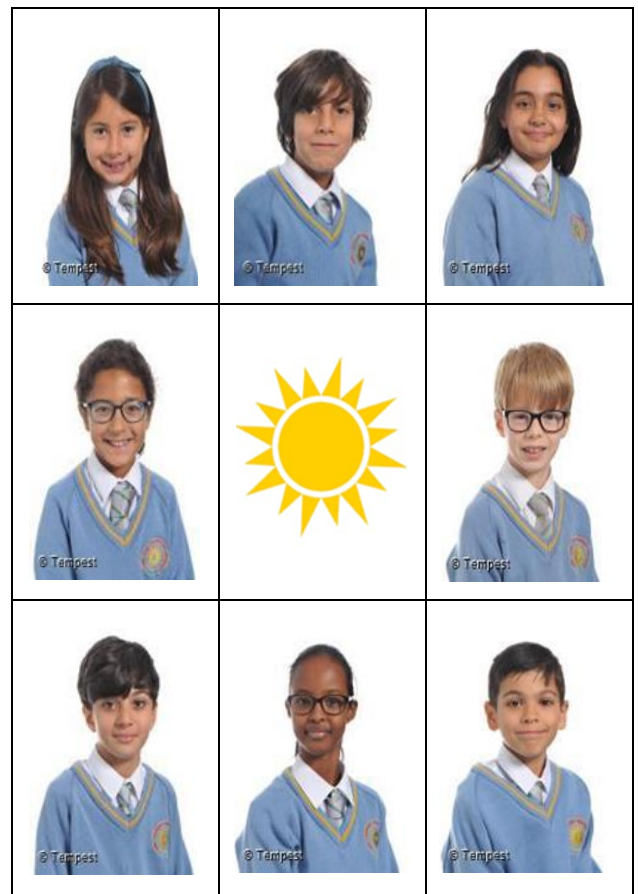


First of all we were joined by Ark's director of Curriculum to come and see how we teach Maths at Conway. We were able to show them lessons, books and talk to our visitors about the amazing Maths work that takes place in classes every day. They were so impressed with how our children speak about Maths and enjoyed their day so much that they asked to come back on Wednesday! This time they were joined by 10 school leaders who had come down from Liverpool to see how Ark Conway does Maths. It was a similar story to before. They were blown away with how enthusiastic the children were in their lessons and how much **perseverance** they put in to be successful in each part of their lesson. The Mathematical language and full sentences used by the children really shone to our guests who want to try and copy it in their schools too! Well done everyone you can be very pleased with how hard you are working.



Stars of the Week

For showing our school value of **Aspiration**, this week our stars of the week are:



This week the attendance figures are:

1 st	Angelou	97.50%
2 nd	Ali	94.58%
3 rd	Obama	94.40%
4 th	Attenborough	93.75%
5 th	Nightingale	93.33%
6 th	Farah	92.50%
7 th	Earhart	91.25%

Dates for your Diary

Tuesday 7th March – Y4 Trip to Kew Gardens

Tuesday 7th March – Y2 Local Area Walk

Thursday 9th March – Reception Class Trip to Gunnersbury triangle

Friday 10th March – Y5 Class assembly

Friday 10th March – Conway celebrating World Book Day

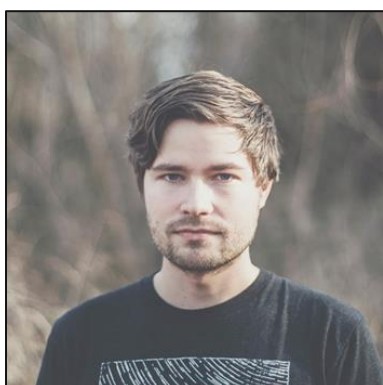
Friday 10th March – Y6 France Trip Workshop

Monday 13th -Friday 17th March – STEM week

Composer of the Term

Our composer for next half term is:

C418



Parent Forum Items:

Parent Forum Deputy Chair Victoria Biggs has kindly volunteered to help lead the Parent Forum! We are excited to have you on board, thank you Victoria!

The Ark Conway camping trip will take place over INSET weekend Friday 7th to Sunday 9th July at Etherley Farm campsite – and everyone's welcome! Organised by Ark parents, 30-40 families camp together in one field enjoying football, water games, picnics, BBQs & roasting marshmallows on the campfire. Cost is £26 per adult & £16 per child. Book your tickets on Classlist / What's On / Ark Conway Family Camping Trip / Get Tickets or use link https://app.classlist.com/parent/#/events/view/963170898?s=105621617&utm_source=SCHOOL&utm_medium=SHARED_LINK Deadline 31st March. Contact Clare Fuchs or Victoria Biggs (year 5 parents) for questions.

Home Learning

Please share all completed home learning work on Seesaw. You can find more information about Seesaw by following this link: **Seesaw home learning**.

Reception: This week, we have been comparing the sizes and bodies of different animals. What are some similarities and differences between you and other animals? Share your findings in any way you would like.

Year 1: In English, we are reading 'Last Stop on Market Street' where CJ imagines what he can see inspired by a piece of music. Draw, write or tell us what you imagine when you listen to some music by C418, our composer of the term.

Year 2: Which South American country would you most like to visit and why? Present your ideas in any way you like.

Year 3: This week we have been learning about the difference between am and pm times. Can you write a schedule for your weekend using am and pm times?

Year 4: Next week we will be learning about deforestation of the Amazon Rainforest. What can you find out about deforestation? Why is it happening? Who or what does it affect most severely? What can we do to stop deforestation happening? Answer any way you'd like on Seesaw!

Year 5: What can you find out about earthquakes and how they impact people nearby? Additionally, please practise your part for our class assembly!

Year 6: How did the Second World War impact Germany? Think about the general population, the soldiers, and the people in leadership roles. Present your findings any way you'd like.

Celebration Assemblies

Please join us at 8:35am for our celebration assembly. ****Parents from all year groups are welcome each week.**

Social Media

Please take a look at our Facebook page 'Ark Conway Primary Academy'. You can also follow us on Twitter: @ARKConway or on Instagram (@arkconwayprimaryacademy)

Safeguarding is everybody's responsibility. Our safeguarding policy can be found in the school office